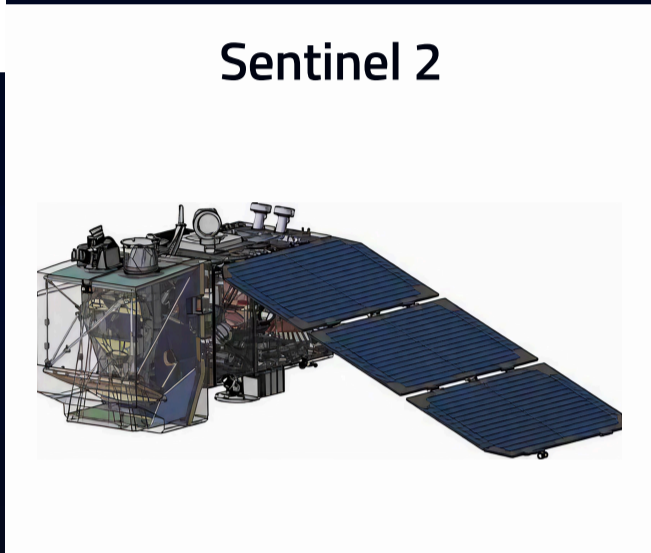


# Building Actionable **Atmospheric Awareness**



Sentinel 5P

Copyright © ESA All Rights Reserved








Sentinel 2

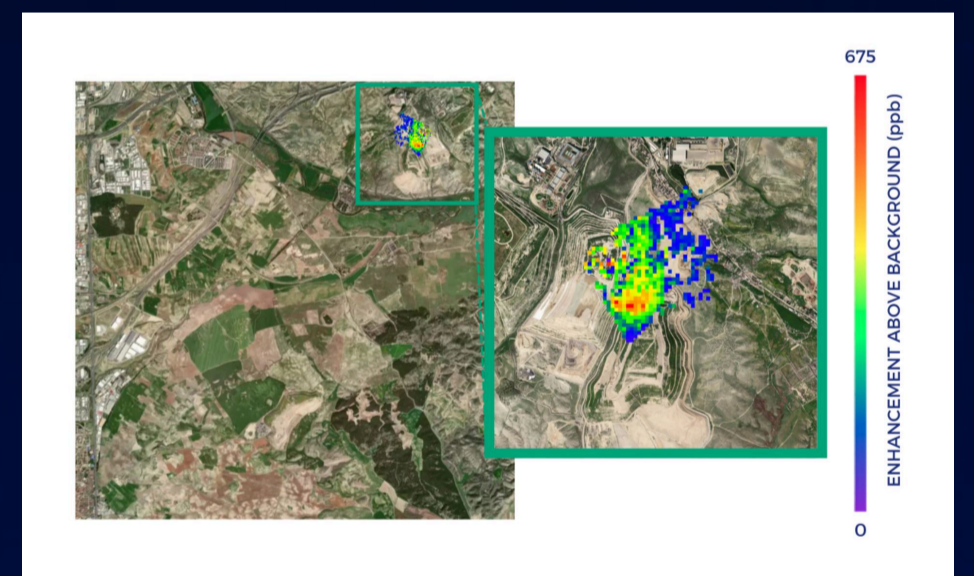
Copyright © ESA All Rights Reserved

## MethaneView: High Emissions

Scepter’s methane detection from public satellite sources offers crucial insights into methane point-source emissions. By utilizing Sentinel 2 and Sentinel 5P satellites, this service provides accurate detection and monitoring capabilities, empowering industries to address environmental challenges.

### Features

	Sentinel 2	Sentinel 5P
 Methane Detection Thresholds	~1000 kg/hr	>5000 kg/hr
 Spatial Resolution	20 meters	5.5 × 7 km
 Revisit Rate	2–5 days	1 day
 Plume Detection	Accurate plume location	Accurate plume location
 Coverage	Available globally with regulatory approval	Available globally with regulatory approval



Copyright © ESA All Rights Reserved

Sentinel 5P Methane emissions detected from Madrid landfill August 2021

### Delivery & Access

Data availability determined within hours of post-data acquisition.

### Data Formats

**Methane Product:** GEOTIFF

**Plume Locations:** Geospatial coordinates