



Building Actionable **Atmospheric Awareness**


MethaneView: Very Low Emissions

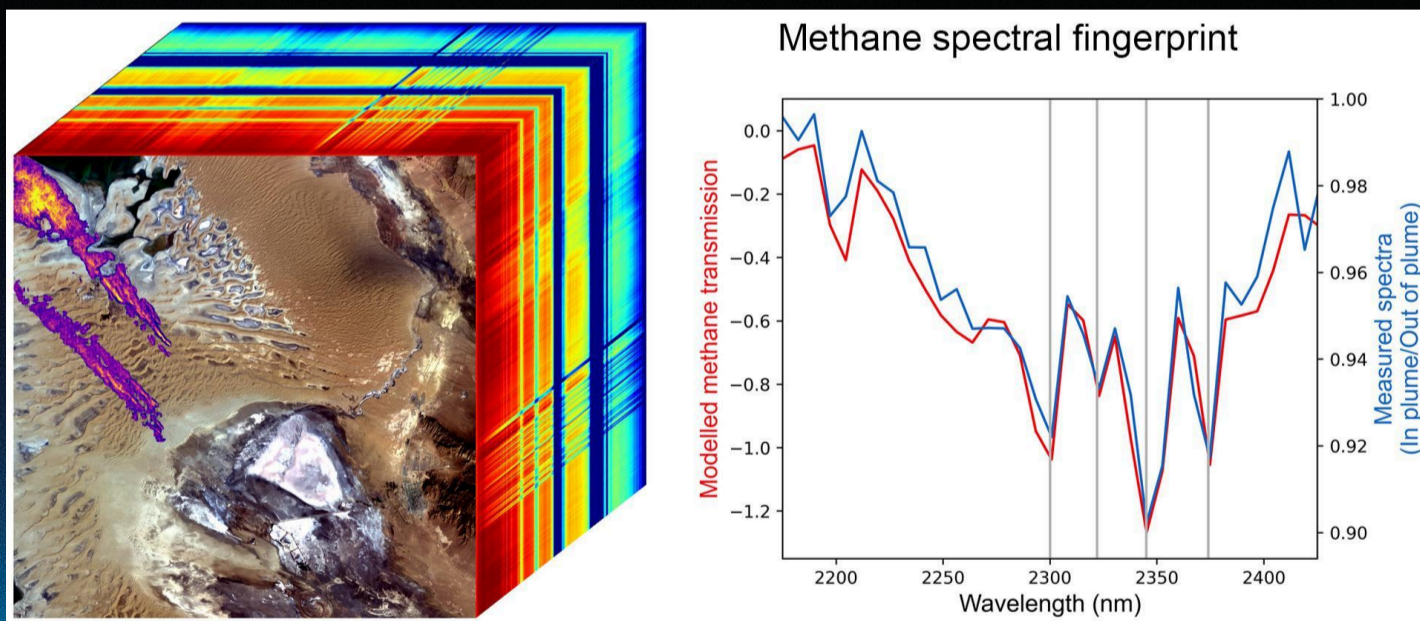
Terrestrial methane field sensors enhance atmospheric monitoring by seamlessly integrating customer data into the ScepterAir platform. With a 15- minute data ingestion frequency and regional product fusion, this solution provides real-time insights into methane emissions, empowering organizations to improve their environmental compliance and sustainability efforts.

Features

- 
Detection Thresholds **1-5 kg/hr**

- 
Detection Frequency **Data ingested every 15 minutes**

- 
Platform **Data available on ScepterAir platform**



images-assets.nasa.gov/image/PIA25593/PIA25593~orig.jpg

Data Formats

Fused regional product: GEOTIFF

Delivery & Access

Field data availability: Accessible within 30 minutes of ingestion on ScepterAir platform.